

# ATEA College

## 2026 Prospectus

*Year 1-13*

*Cambridge International School*



Cambridge International School

# ATEA College

[www.ateacollege.com](http://www.ateacollege.com)



## *Nurturing in excellence ...*

ATEA College's small size and safe family atmosphere ensure your child is nurtured with individual attention from teachers who know every student.

Small classes and the flexibility of having all levels of schooling in one school means your child's course is measured, resourced, adapted and progressed according to their needs.

## *... and knowledge*

ATEA College gives your child a solid foundation in knowledge and skill. Our broad subject range using the *Cambridge International Curriculum* at all levels expands children's minds, challenging them to achieve their best.

It also ensures children who need extra help, get it.

## *... along the Cambridge Pathway*

Our school is an approved Cambridge International School, registered to offer education programmes and qualifications from the Cambridge Pathway. Cambridge International programmes inspire your child to love learning, helping them discover new abilities and a wider world. We offer Cambridge programmes through a Cambridge Associate.

Foundation Member of The Independent Christian Schools Fellowship  
NZQA (New Zealand Qualifications Authority) Accredited  
Registered by the New Zealand Ministry of Education  
Signatories to the Code of Practice for International Students

---

21 Domain Road, Panmure, Auckland, New Zealand  
[www.ateacollege.com](http://www.ateacollege.com)

---

## **CONTENTS**

### **THE ATEA COLLEGE WAY**

Principal's Introduction	p5	Excellence	p6
--------------------------	----	------------	----

### **CLASSES and COURSES**

Junior Primary School	p7	Senior Primary School	p8
Junior College	p9	Senior College	p10
International Examinations	p11	Careers Guidance	p12
Vocational Courses	p12	International Orientation	p12
Distance Learning	p12	Exams for External Students	p12
International Students	p13	Part-Time Students	p14

### **ENROLLING**

How to Enrol	p15
--------------	-----

### **RULES and PROCEDURES**

School Rules	p16	Homework	p16
Uniform	p16	IT Use & Safety	p16
Information & Privacy	p17	Discipline	p17
Students Driving to School	p17	Solving Problems	p17

### **FEES**

International Students	p18	New Zealand Students	p19
------------------------	-----	----------------------	-----

### **DIRECTORY:**

Important Dates & How to Contact Us	p20
-------------------------------------	-----

## INTRODUCTION

### Welcome to ATEA College

Parents have goals about what they want their child to know and to learn, as well as what experiences they will have.

Knowledge is built on knowledge. The more you know, the more you are able to learn. So schooling at ATEA College is knowledge-based. Our curriculum is cumulative and content-specific. By the end of primary years, students are writing well-structured compositions, confidently adding, subtracting, multiplying and dividing, and know the basics of physics, biology and chemistry; forces, chemical substances, and their body's structure. Students achieve outstanding academic results in the Cambridge International examinations.

Our objective is to make the defining activity of this school thinking and reasoning based on coherent knowledge. In the hope that their education here will play its role in helping students discover who they are, and their meaning and purpose.



*Eunice Hall*  
MSc, PGDSE

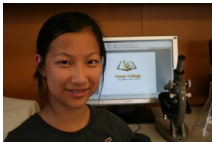
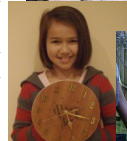
## EXCELLENCE

We are committed to helping each child achieve the very best possible in academic knowledge, practical skills and godliness of character.

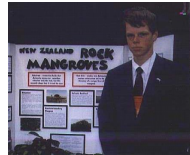
ATEA College is an approved Cambridge International School, registered to offer education programmes and qualifications from the Cambridge Pathway. We teach a unified, international curriculum giving children a seamless progression all the way through their schooling from Year 1 to Year 13, and qualifications recognised for their excellence by employers and universities world-wide.

The achievements of our students have been recognised nationally and internationally through examinations and competitions across the breadth of the curriculum.

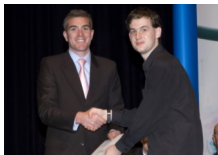
But it would be a mistake to think high standards means excellence for the academically able and everyone else struggles. Excellence the ATEA College way means helping all students improve and extend skills and knowledge according to their own gifts and potential. Achievement in practical subjects such as woodwork and horticulture is valued as highly as achievement in science and the arts. Because students are not streamed but have individualised goals and courses, each child's learning can be balanced to extend them according to their gifts.



Rennie came top in the world in *Cambridge International* examinations in IGCSE Science, and AS and A Level Mathematics.

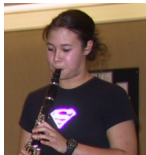


Andrew won the New Zealand Science Fair with original research about mangroves and represented New Zealand at the *Intel International Science Fair* in the United States where he won the *Kodak Award for Use of Photography in Science*.

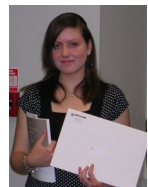


Jonathan (right) is presented an award by *Cambridge International* for gaining first place in New Zealand in A Level Computing.

Sara won the *University of Auckland History Writing Competition and Scholarship*



Emily was a finalist (the highest award) in the national *Tower Young Composer Competition*, performing her *Diversions* with the *Netherlands Wind Ensemble* at the New Zealand Festival in Wellington.



We offer Cambridge International programmes and qualifications through a Cambridge Associate.

## JUNIOR PRIMARY SCHOOL



### Years 1—6 A Head Start in the Basics

We give children a head start in basics, a foundation for learning. They learn to read, do real maths, and explore the wonder and diversity of the world.

#### Small, Nurturing Class

- 25 students maximum with small break-off groups as needed
- Learning adjusted to individual maturity and ability
- Attractive computer-equipped classrooms
- Using the Cambridge Primary curriculum, tests and examinations.

#### A Curriculum that Works

- Using phonics, 5 year-olds normally learn to read to a tested 8 year reading level in their first year at school
- Children succeed at the four rules of arithmetic (while their peers in some schools “explore number and shapes” but can’t add and subtract)
- They learn to write stories that tell a story because their ideas are given order and structure—and they learn how to spell accurately, use good grammar, and present work in attractive hand-writing
- They learn how their daily work relates to the world, and the meaning and purpose of living
- Basics of Writing, Spelling, Reading and Maths are extended to include Computing, Science, History, Geography, Physical Care, Art and Music

#### Working With Parents

- Daily log book, weekly test results, and all work shown to parents
- Regular written reports, and parent interviews

#### Junior Primary Hours

9:00 am—3:00 pm

(For this year’s Terms see page 22)

#### Homework

30 minutes each night

#### Principal Junior Primary Tuition Fee

\$2425 per term

Includes GST, all stationery, textbooks & most trips. Conditions apply.

For details see page 19

## **SENIOR PRIMARY/MIDDLE SCHOOL**



### **Years 7—8** (Intermediate/Middle) **Enrichment & Growth**

We continue teaching the basics but enrich the range of subjects and skills, provide opportunities for studies in more depth and develop independence in work habits.

#### **Small Class, Individual Help**

- 25 students maximum with break-off groups as needed
- Courses are adapted for each student to meet specific needs
- Attractive computer-equipped classrooms
- Using the Cambridge Lower Secondary curriculum and tests

#### **Enriching the Basic Curriculum**

- Development of the basics in English and Maths is maintained
- A balanced core curriculum includes ICT, Science, History, Geography, Physical Care, Music and Art
- Students are introduced to languages (these may include Māori, French, NT Greek or Hebrew)
- Increased emphasis is placed on independent research skills, evaluating and applying information, and responsible decision making
- Technology (including electronics, cooking, metalwork, woodwork, crafts, horticulture, and technical drawing) is introduced in years 7 & 8
- In Years 7 & 8 exams are introduced (at the end of each year) and students exhibit their first independent research projects in public

#### **Working With Parents**

- Daily log book, weekly test results, and all work shown to parents
- Regular written reports, and parent interviews

#### **Senior Primary Hours**

9:00 am—3:00 pm

(For this year's Terms see page 22)

#### **Homework**

40 minutes each night

#### **Senior Primary Tuition Fee**

\$2425 per term

Includes GST, all stationery, all textbooks & most trips. Conditions apply.

For details see page 19

## **JUNIOR COLLEGE**



### **Years 9—10 Beginning Specialisation & Independent Study**

A core course and specialist options prepare students for advanced secondary schooling or vocational options according to individual gifts and calling.

#### **Small Class, Individualized Courses**

- 21 students maximum: most teaching individually or in small groups
- Gifted specialist teachers bring special opportunities
- Role models cross age boundaries: peer pressure is minimised
- Attractive, modern resources and computer-equipped classrooms
- Using the Cambridge Lower Secondary Curriculum and Tests

#### **Beginning Specialisation and Independent Study**

- Modular courses based on the Cambridge Curriculum—students work at their own level in each subject, learning good work habits and responsibility for time management
- Core courses prepare students for Cambridge IGCSE and A Levels
- Core subjects are Divinity/Bible, English, History & Global Studies, Science, Mathematics, Art, Music, Technology (with computing) and Physical Care.
- Vocational, Life Skills and Extension options can be chosen from the full range of ATEA College and Cambridge subjects

#### **Working With Parents**

- Parents, students and the school plan and monitor courses together
- All assessments are reported on-line to parents as they are completed
- Regular written reports and parent interviews

#### **Junior College Hours**

9:00 am—3:00 pm

(For this year's Terms see page 22)

#### **Homework**

Years 9 & 10: 1—2 hours each night

#### **Junior College Tuition Fee**

\$2971 per term

Includes GST, all stationery, all textbooks & most trips. Materials in some courses are extra. Conditions apply.

For details see page 19

## **SENIOR COLLEGE**



### **Years 11—13 Flexible Preparation for Tertiary Study & Vocations**

The diverse needs of students are met with extensive course choices leading to international qualifications, vocational certificates and work experience.

As a Cambridge International School, we offer the Cambridge Upper Secondary and Advanced programmes through a Cambridge Associate.

#### **Individual & Small Group Tuition**

- Courses are individually planned and taught in groups of 1 - 5 students
- Stimulation from interaction with students of different ages
- Teachers with special knowledge and skill
- Attractive, fully equipped, computerised classrooms and tutorial rooms
- Using the Cambridge International Education curriculum

#### **Flexible Curriculum leads to International Qualifications**

- Core subjects are selected from the Cambridge International Education extensive list with Polytech and vocational options
- There are no exclusions in the selection and matching of subject options. Students choose any combination from the range of Cambridge and vocational subjects.
- Students can graduate with a Cambridge AICE Diploma, A Levels, or IGCSE, (see page 11) and vocational qualifications and experience (see page 12)

#### **Working With Parents**

- Parents, students and the school plan and monitor courses together
- All assessments are reported on-line to parents as they are completed
- Regular written reports and parent interviews

#### **Senior College Hours**

9:00 am—4:00 pm

(For this year's Terms see page 20)

#### **Homework**

3—4 hours each night for A Levels

2—3 hours each night for other courses

#### **Senior College Tuition Fee**

\$3553 per term, practical subjects extra.  
Includes GST, all textbooks, all stationery  
& most trips. Materials are extra in some  
courses. Conditions apply.

For details see page 19

## INTERNATIONAL EXAMINATIONS

ATEA College is a *Cambridge International School* presenting opportunities for students in a range of qualifications recognised and respected world-wide.

College courses include those preparing students for Cambridge International Education examinations such as Primary and Lower Secondary Checkpoint. We also provide access to Cambridge examinations for external students, home-schooled students and students at affiliated schools. A separate booklet *Cambridge International Education at ATEA College* provides details of courses and qualifications. The main points are:

- ATEA College students planning to sit Cambridge examinations must attend a subject evening with their parents at the start of each year
- Year 12 & 13 students aiming for A levels and/or AICE need to plan a two year course of 3 to 8 subjects at AS and A (or A2) level
- Cambridge A and AS Levels provide New Zealand University Entrance
- Students in Years 10-13 may include IGCSE papers in their courses

### Subjects

Students may select courses from the full range of Cambridge subjects. Not all are taught at ATEA College in any one year, but our aim is to provide teachers and courses to meet each student's gifts and preferences as subjects are chosen.

The range of subjects includes: **Languages:** Afrikaans, Arabic, Chinese, Dutch, French, German, Portuguese, Spanish, Tamil, Urdu. **English:** English Language, English—Literature, English Language and Literature. **Mathematics:** Mathematics, Further Mathematics, Higher Mathematics. **Sciences:** Biology, Chemistry, Coordinated Science, Environmental Management, Physics, Marine Science, Sport and Physical Education. **Humanities and Social Sciences:** Biblical Studies, Classical Studies, Drama, Economics, English Literature, European History, French Language and Literature, Geography, Global Perspectives, Hinduism, History, International History, Islamic Studies, Law, Media Studies, Music, Psychology, Sociology, Thinking Skills, Travel and Tourism, US History. **Business, Creative, Technical and Vocational:** Accounting, Art and Design, Business, Computer Science, Design and Technology, Digital Media and Design, Economics, Information Technology.

### Why Cambridge International Education?

- Cambridge meets our standards, and NZQA qualifications (e.g. NCEA) do not
- Our Christian perspective is respected and accepted within its framework
- Cambridge qualifications are recognised all over the world
- They are trustworthy and external-exam based
- They are structured around a challenging, quality curriculum that fits our aims
- They are flexible, meeting the needs of both vocational and academic students



We offer Cambridge International programmes and qualifications through a Cambridge Associate.

## **OPTIONS TO MEET CHILDREN'S NEEDS**

Because we aim to help parents with the educational nurture of their children we look for the best way to meet the differing needs of different children. Here are some of the ways we can help:

### **CAREER & TERTIARY STUDY GUIDANCE**

We provide students with detailed assessment and career information, advice on university and vocational courses and enrolment, and tertiary funding. University and Student Support liaison staff regularly visit the school.

### **VOCATIONAL & LIFE-SKILLS COURSES**

Options include practical and academic courses for vocational qualifications, work experience, life-skills and courses in subjects at any appropriate level.

### **INTERNATIONAL STUDENT ORIENTATION & EXTRA ENGLISH**

We provide 10 week orientation courses for international students wanting to prepare for enrolment in a New Zealand school. A student visa is not required for these courses. We also provide ongoing ESOL support for international students.

### **SUMMER & WINTER SCHOOL FOR STUDENTS**

We provide short term courses for students wanting to improve their English and other subjects. Lessons are held for two hours each morning during our term breaks/school holidays, and for at least one week. These courses are provided by arrangement, please ask for more information. A student visa is not required.

### **DISTANCE LEARNING**

ATEA College has a long record of supporting home schooling and other Christian schools. Some of our curriculum is available for purchase. Anyone can make use of those resources. Please enquire. (We do not provide support or advice for distance learning students.)

### **EXTERNAL ENTRIES FOR EXAMINATIONS**

The school encourages external students to apply to enter ATEA College and Cambridge examinations. ATEA College exams can be sat at home under proper supervision, but external examinations, including Cambridge exams, must be sat at ATEA College. Students and parents should discuss proposals well in advance of examination dates, and acceptance of any application is at our discretion. Advice about examinations is published periodically on our website. Subjects requiring practical examinations are excluded.

### **BRIDGING COURSES**

Students who need a little extra help in preparation for vocational or tertiary studies, or to gain an entrance qualification, can enrol for a programme of one or two subjects by arrangement.

## INTERNATIONAL STUDENTS

We welcome international students and make special provision for their learning and welfare. International Students enrolling in ATEA College

- Must have a student visa to study in New Zealand
- If younger than thirteen years old must be staying in New Zealand with a parent
- If thirteen years of age or over must be in the care of a parent, or a relative or close family friend appointed by parents as Caregiver (even if living in a Homestay)
- Must be able to study at an appropriate level in English, or be also enrolled in an approved ESOL class
- Must pay the International Student Fees as scheduled. Full details are on our website: <http://www.ateacollege.com/enrolling/>

**Code:** ATEA College is a signatory to the 2016 *Code of Practice for the Pastoral Care of International Students* published by the NZ Qualifications Authority. Copies of the Code are available on request from this College or from the New Zealand Qualifications Authority website at <http://www.nzqa.govt.nz>

**NauMai NZ** provides reliable up-to-date information about life and study in New Zealand. See [https://naumainz.studyinnewzealand.govt.nz/?\\_ga=2.215283415.1750364516.1560211960-1050787011.1560211960](https://naumainz.studyinnewzealand.govt.nz/?_ga=2.215283415.1750364516.1560211960-1050787011.1560211960)

**Health and Travel Insurance:** Most international students are not entitled to publicly funded health services while in New Zealand unless they are a resident or citizen of Australia; a national of the United Kingdom in New Zealand; or the holder of a temporary permit that is valid for two years or more. If you are not in one of these special categories and you receive medical treatment you will be liable for the full costs of that treatment. We provide *Travel and Medical* insurance for international students.

**Immigration:** Full details of visa and permit requirements, advice on rights to employment in New Zealand while studying, and reporting requirements are available through the New Zealand Immigration Service, and can be viewed on their website at <http://www.immigration.govt.nz>. Information about life and work in New Zealand can be found at [www.studyinnewzealand.govt.nz/live-work](http://www.studyinnewzealand.govt.nz/live-work). There is information about the costs of living in New Zealand on the webpage: [www.newzealandnow.govt.nz/living-in-nz/money-tax/comparable-living-costs](http://www.newzealandnow.govt.nz/living-in-nz/money-tax/comparable-living-costs).

**Problems:** If you have a complaint relating to the Code of Practice 2016, first follow our formal complaint process. Details for dealing with problems are in student's Away from Home Guide and on our website. If this does not resolve your complaint, you can contact the [New Zealand Qualifications Authority](http://www.nzqa.govt.nz) (NZQA) by phone on 0800 697 296 or email [qadrisk@nzqa.govt.nz](mailto:qadrisk@nzqa.govt.nz). Or, if it is a financial or contractual dispute, you can contact [iStudent Complaints](http://www.istudent.org.nz/making-a-complaint) by phone on 0800 00 66 75 or their website: <http://www.istudent.org.nz/making-a-complaint>

**International Student Fees & Refunds:** All fees for the full year must be paid before beginning their course. A portion of prepaid Tuition Fees will be refunded if an International Student withdraws before starting at ATEA College. No other refunds will be made. For details see page 18.

**English Language Requirement:** International Students enrolling in courses leading to external qualifications must have passed a ATEA College examination in English to a satisfactory standard.

## PART-TIME STUDENTS

Part-time students are welcome to join our classes. The flexibility of our courses and classes means we are able to accept students part-time at any level, especially for Senior College in preparation for Cambridge International Education Examinations.

Part-time students

- Take part in regular ATEA College classes for the relevant level and subjects.
- Have class work and assignments marked and gain the benefit of instruction from our specialist staff and interaction with other students.
- Are eligible for entry into ATEA College examinations and Cambridge International Education Examinations as ATEA College students (exam fees apply).
- Are responsible for supplying their own resources such as text books and stationery (although Partner Schools might supply these for their students).

Bible/Biblical Studies is a compulsory course for pupils in Years 1-11, including part-time students. Up to two other courses may be added for part-time study. (If taking more than three courses at ATEA College, full-time enrolment is required.)

Courses for part-time students normally have a minimum of 10 hours of classes a term (usually 1 hour weekly, but this can vary). Practicals (such as labs in science) count as separate courses so that most Senior College part-time science students are likely to need to enrol in two courses for each science subject.

Part-time students will be issued with the same unit guides and class notes as other ATEA College students studying the same courses. Their own Partner School or home-school tutors are responsible for guidance not included in ATEA College classes, or for help with work included in units but not directly taught in class.

**Enrolling:** Students may enrol

- directly as for other students (see page 15), or
- through a Partner School (talk to your Partner School Principal)

**Partner Schools:** Partner Schools enter into an agreement with ATEA College that is tailored for each school but usually includes a concession on fees in return for the Partner School being responsible for administration of student's attendance, work, discipline and reporting, and collation of examination entries.

**Part-time Student Fees:** Fees are available on request depending on the proposed course. They are paid in three instalments, due by the first day of terms 1, 2 and 3. Students from Partner Schools may receive a school-based concession.

## ENROLLING

Applications for enrolment are considered for any child on application from parents using College enrolment forms. Enrolments are for a minimum period of three years. Full details of enrolment steps are on our website: in every case that is the best place to go for enrolling information. Here we outline the main steps:

### How to Apply for Enrolment at ATEA College:

- Read this Prospectus.
- Complete the *Application for Enrolment Form* and send it to ATEA College with the relevant Registration Fee, the most recent school report, a copy of a Birth Certificate and Passport, and anything else that will help us assess the application.
- If your application matches a vacancy we will interview the parents and child.
- We will let you know within a week whether or not your application is accepted.
- All new enrolments are provisional for a term and will be confirmed when we are satisfied the enrolment is appropriate.

### Distance Learning:

It is not possible to enrol for Distance Learning. Lesson plans published on our website are available for use under the *Open License* published there, but we are unable to offer personal support for Distance Learning students.

### Assessing Applications:

We will do what we can to help parents committed to our schooling, but we have complete discretion as to which students will be enrolled.

### Conditions of Enrolment:

- Attendance must be regular and punctual, with absences explained in writing
- Students must complete class work and homework diligently and punctually
- Our school discipline and rules are to be supported
- School uniform must be worn, and school grooming guidelines complied with, while at school, and while travelling to and from school
- Teachers may only be approached about school matters at school
- Fees must be paid by the due date
- Attendance is required for all notified Parent Interviews
- You must give one term's notice of withdrawal from enrolment or courses.

### Withdrawal from Enrolment and Courses:

One term's written notice of withdrawal from enrolment or courses is required:

- We must know before a term starts if your child is leaving at the end of that term: you pay that term's fees
- **If you tell us of a withdrawal after the start of a term, you will need to pay that term's fees, and the fees for the following term.**

## OUR CODE, RULES & POLICIES

### CODE OF CONDUCT

Students should respect authority, adults, other students; and the school, and treat others as though they are more important than themselves.

Students are expected to know and follow the rules of the school and the classroom.

### SCHOOL RULES

Our school rules are displayed in every classroom and are published in our *Parents' Handbook*. Particular rules and policies that parents need to be aware of when planning for children to attend ATEA College are listed on these two pages.

### HOMEWORK

Homework is an essential part of the school programme and is to be completed as required. In Grades 1 - 6, children will normally be expected to complete 15 - 20 minutes homework each night. For Grades 7 & 8 homework will take 30 - 40 minutes; Grades 9 & 10: 1 - 2 hours; Grade 11: 2 - 3 hours; and Grades 12 & 13: 2 - 4 hours each night. (We may discuss variations in special circumstances.)

### UNIFORM

Please contact <admin@ateacollege.com> for details of the uniform and how items may be ordered. Students are to be neatly, and cleanly dressed in school uniform at all times (including during travel to and from school). During **Physical Care** lessons *Primary students* are to wear: Shorts and a T-shirt or top; suitable shoes; *Other students* are to wear: Track pants or shorts, and a T-shirt or top; sports shoes. All clothing items are to be labelled with the student's name [using a name that makes it unambiguous to which family the item belongs].

**Hair:** natural, neat and tidy hair, pinned back from the face and long hair tied up off the collar;

No make-up, nail polish or jewellery are to be worn except plain metal studs in pierced ears.

**Indoors:** Indoor shoes, slippers or socks when inside.

**Sun Hats:** Uniform sun hats are to be worn when outside in Terms 1 & 4.

### INFORMATION TECHNOLOGY (IT) USE & SAFETY

All students are issued with a tablet computer, Chromebook, or laptop and have access to age-appropriate computing and internet facilities. We have a pro-active Internet Safety Policy which, along with our *Cybersafety Contract Forms*, is available on our website.

IT use by Primary students is always directly supervised by staff. Older students are required to sign and abide by an *Cybersafety Contract* committing them to safe and appropriate use.

All computer use takes place in “public” spaces in the school where use is observed and monitored by other students and staff. Secondary students may bring their own lap-tops and tablets to school for school use, providing they always comply with their *Cybersafety Contract*.

Cell phones must be switched off before arrival at school and may not be switched on in any circumstances until the end of the school day.

**BYOD:** Students may ask permission to bring and use their own tablets and computers; permission may be granted - at the discretion of the Principal. Use of all such devices at school is subject to the same rules for use and monitoring of content, including stored content, that apply for school-supplied devices.

### **PERSONAL INFORMATION & PRIVACY**

All personal information collected and stored by the College is collected only when relevant to the work of the College. Relevant information will be released in the following circumstances:

- A parent or the student gives permission
- A student is transferring to another school
- Where there is a legal obligation to do so

Under the Privacy Act 2020 you have the right of access to all information we hold about you or your children. We have a detailed protocol regarding Personal Information which we are happy to show you.

Students' school work, details of honours earned and awards achieved, and photographs of children in the school environment, and their names, may be published by the school for educational purposes and in publishing information about the school.

**DISCIPLINE** Correction may include:

- Rebuke
- Detentions (up to 15 minutes at intervals; and for secondary students up to 1 hour after school )
- Repeats and/or penalty assignments
- Restitution with a penalty for property damaged, abused or stolen.

**Serious Problems:** Where serious disciplinary problems arise with a domestic student, we will do our best to guide students and discuss the issues with parents to seek a resolution. We may stand down, suspend or expel a domestic student when in our judgement the misbehaviour of the student is sufficiently serious. You may ask that any suspension or expulsion be reviewed. In accordance with the principles of natural justice, International Students may be excluded from class (but not school) or may be expelled. The subsequent decision of the school is final.

Refunds of fees cannot be given when enrolments end for disciplinary reasons.

### **STUDENTS DRIVING TO SCHOOL**

Before students drive to school they must meet a set of conditions including applying for and being granted prior permission. Details will be explained on application.

### **SOLVING PROBLEMS**

This is a small school and all members of the school community have direct access to the Principal and other staff. We have a commitment to resolving problems promptly and fairly. We hope that most problems can be resolved informally but procedures for making complaints and resolving problems are set out in the school's *Parent's Handbook*, *Secondary Student's Guide* and *Away from Home Guide* as well as on our website.

## INTERNATIONAL STUDENTS

## FEES for 2026

Fee Tier	Fee Per Year
<b>Primary School:</b> Years 1 - 8	<b>\$NZ 21530</b>
<b>Junior College:</b> Years 9 - 10	<b>\$NZ 25350</b>
<b>Senior College:</b> Years 11 - 13	<b>\$NZ 29890</b>
<p><b>Discount:</b> An International Student's Fee will receive a discount of 8% if the full year's fees are paid by 15 December in the preceding year.  A Full year's fees must be paid before tuition begins.  Fees for students beginning during the school year will be adjusted according to the terms attended. Students beginning in terms 3 &amp; 4 are required to enrol and pay tuition fees for the following year at that time.  Enrolments are accepted from international students on an annual basis. Students who complete a satisfactory year will be offered placement for the following year in November/December, which must be confirmed by payment of a Placement Fee.  These fees include <b>Uni-Care Travel and Health Insurance</b>, except when students plan to attend for less than one term, when insurance will be invoiced separately.  We accept cash and internet banking (no Credit Cards). Cash payments may attract a "Cash Handling" fee at the bank which you will be charged for.</p> <p><b>Special Tuition: Group</b> \$36 per hour; <b>Individual</b> \$72 per hour.</p> <p><b>Document Fee:</b> \$125 per document for nonstandard or replacement documents.</p>	

## ENROLMENT

**Registration Fee:** All applications require a \$500.00 registration fee. This fee is not refundable.

**Enrolment Fee:** \$NZ 2200.00. This fee is required to confirm acceptance of any place offered. This amount is an additional and separate fee and is not offset against tuition fees. It is not refundable.

## WITHDRAWALS &amp; REFUNDS

- If an **International Student** withdraws before starting at ATEA College, a refund of prepaid Tuition Fees will be made less a deduction of 25% (to cover the school's commitment to the first term of tuition).
- **No other refunds will be made.**

All fees are in \$NZ, include GST @ 15%, are correct @7 January 2026 & are subject to change without notice.

## NEW ZEALAND STUDENTS

## FEES for 2026

Fee Tier	Fee	
	Per Year	Per Term
<b>Primary School:</b> Years 1 - 8	\$9670	<b>\$2425</b>
<b>Junior College:</b> Years 9 - 10	\$11880	<b>\$2971</b>
<b>Senior College:</b> Years 11 - 13	\$14212	<b>\$3553</b>

**Discount:** Course Tuition Fees receive a 2% discount if the year's fees are paid in full by 3:00 pm on the due date.

**Late payment:** When a tuition fee is not paid in full 30 days after the due date, the amount outstanding will be charged interest at 20% pa.

**Another payment option is 10 monthly equal payments by automatic payment** starting February and finishing November. Please contact the Bursar for further details: <bursar@ateacollege.com>. Please advise the Bursar by 20 January should you wish to take advantage of this option. (The late penalty applies). We accept cash and internet banking (no Credit Cards). Cash payments may attract a "Cash Handling" fee at the bank which you will be charged for.

**Registration Fee:** All applications require a \$300.00 registration fee. This fee is not refundable.

**Enrolment Fee:** \$2400.00. This fee is required to confirm acceptance of any place offered. This amount is an additional and separate fee and is not offset against tuition fees. It is not refundable.

**Practical Subjects Years 11-15:** \$183 per practical subject per term applies to each course in the Sciences, Art, ICT/Computer Science and Languages.

**Special Tuition: Group** \$36 per hour; **Individual** \$72 per hour.

**Document Fee:** \$125 per document for nonstandard documents (eg graduation certificates) or replacement of documents (e.g school records or insurance policies).

## WITHDRAWALS &amp; REFUNDS

- One term's notice of withdrawal is required. We must know before a term starts if your child is leaving at the end of that term: you pay that term's fees. If you tell us of a withdrawal after the start of a term, you must pay that term's fees, and the fees for the following term.
- Fees paid in advance of their due date may be refunded if proper notice of withdrawal has been given. **No other refunds will be made.**

All fees include GST @ 15%, are correct @ 7 January 2026 and are subject to change without notice.

## 2026 DIRECTORY

**Web site:** <http://www.ateacollege.com>

**Address:** 21 Domain Road, Panmure,  
Auckland 1072, New Zealand

**email:** [admin@ateacollege.com](mailto:admin@ateacollege.com)

The school does not wish to receive unsolicited electronic messages at this or any other address.

**Phone:** (+64) 09-570-5873

**Principal (Cellular):** (+64) 027-414-3221

To notify absences please email:

**[absences@ateacollege.com](mailto:absences@ateacollege.com)**

### 2026 TERMS & HOLIDAYS

<b>Term</b>	<b>Starts</b>	<b>Ends</b>
Term 1	27 January	2 April
Term 2	20 April	26 June
Term 3	20 July	25 September
Term 4	12 October	Secondary: 4 December Primary: 11 December

**Statutory Holidays** falling in term time will be observed.

In 2026 they are: Waitangi Day, 6 February; Anzac Day Observance, 25 April; King's Birthday, 1 June; Matariki, 10 July; Labour Day 26 October.