



ATEA College

Founded in 1988 as 'Carey College'

Primary, Middle & Secondary School
for Years 1 to 13

2020 Prospectus

ATEA College

www.ateacollege.com



Nurturing in excellence ...

ATEA College's small size and safe family atmosphere ensure your child is nurtured with individual attention from teachers who know every pupil.

Small classes and the flexibility of having all levels of schooling in one school means your child's course is measured, resourced, adapted and progressed according to their needs.

... and knowledge

ATEA College gives your child a solid foundation in knowledge and skill. Our broad subject range using the *Cambridge International Curriculum* at all levels expands children's minds, challenging them to achieve their best.

It also ensures children who need extra help, get it.

... along the Cambridge Pathway

Our school is a Cambridge International School, registered with Cambridge Assessment International Education, a department of the University of Cambridge. Cambridge International programmes inspire your child to love learning, helping them discover new abilities and a wider world. We offer Cambridge programmes through a Cambridge Associate.

Foundation Member of The Independent Christian Schools Fellowship
NZQA (New Zealand Qualifications Authority) Accredited
Registered by the New Zealand Ministry of Education
Signatories to the Code of Practice for International Students

21 Domain Road, Panmure, Auckland, New Zealand
www.ateacollege.com

CONTENTS

THE ATEA COLLEGE WAY

Principal's Introduction	p5	Excellence	p6
--------------------------	----	------------	----

CLASSES and COURSES

Junior Primary School	p7	Senior Primary School	p8
Junior College	p9	Senior College	p10
International Examinations	p11	Careers Guidance	p12
Vocational Courses	p12	International Orientation	p12
Distance Learning	p12	Exams for External Students	p12
International Students	p13	Part-Time Students	p14

ENROLLING

How to Enrol	p15
--------------	-----

RULES and PROCEDURES

School Rules	p16	Homework	p16
Uniform	p16	IT Use & Safety	p16
Information & Privacy	p17	Discipline	p17
Pupils Driving to School	p17	Solving Problems	p17

FEES

International Students	p18	New Zealand Students	p19
------------------------	-----	----------------------	-----

DIRECTORY:

Important Dates & How to Contact Us	p20
-------------------------------------	-----

INTRODUCTION

Welcome to ATEA College

Parents have goals about what they want their child to know and to learn, as well as what experiences they will have.

Knowledge is built on knowledge. The more you know, the more you are able to learn. So schooling at ATEA College is knowledge-based. Our curriculum is cumulative and content-specific. By the end of primary years, pupils are writing well-structured compositions, confidently adding, subtracting, multiplying and dividing, and know the basics of physics, biology and chemistry; forces, chemical substances, and their body's structure. Secondary pupils achieve outstanding academic results, including Top in New Zealand and Top in the World in the Cambridge International examinations.

Our objective is to make the defining activity of this school thinking and reasoning based on coherent knowledge. In the hope that an education here will play its role in helping pupils discover who they are, and their meaning and purpose.

Eunice Hall
MSc, Dip Tching



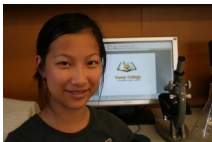
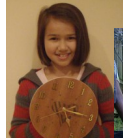
EXCELLENCE

We are committed to helping each child achieve the very best possible in academic knowledge, practical skills and godliness of character.

ATEA College is registered by Cambridge Assessment International Education. We teach a unified, international curriculum giving children a seamless progression all the way through their schooling from Year 1 to Year 13, and qualifications recognised for their excellence by employers and universities world-wide.

The achievements of our students have been recognised nationally and internationally through examinations and competitions across the breadth of the curriculum, and the University of Cambridge has repeatedly awarded the College its *Top Centre Certificate*.

But it is a mistake to think high standards means excellence for the academically able and everyone else struggles. Excellence the ATEA College way means helping all pupils improve and extend skills and knowledge according to their own gifts and potential. Achievement in practical subjects such as woodwork and horticulture is valued as highly as achievement in science and the arts. Because students are not streamed but have individualised goals and courses, each child's learning can be balanced to extend them according to their gifts.



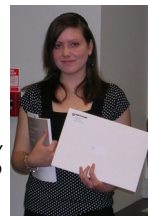
Rennie came top in the world in *Cambridge International* examinations in IGCSE Science, and AS and A Level Mathematics.



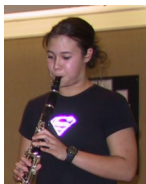
Andrew won the New Zealand Science Fair with original research about mangroves and represented New Zealand at the *Intel International Science Fair* in the United States where he won the *Kodak Award for Use of Photography in Science*.



Jonathan (right) is presented an award by *Cambridge International* for gaining first place in New Zealand in A Level Computing.



Sara won the *University of Auckland History Writing Competition and Scholarship*



Emily was a finalist (the highest award) in the national *Tower Young Composer Competition*, performing her *Divisions* with the *Netherlands Wind Ensemble* at the New Zealand Festival in Wellington.



We offer Cambridge International programmes and qualifications through a Cambridge Associate.

JUNIOR PRIMARY SCHOOL



Years 1—6

A Head Start in the Basics

We give children a head start in basics, a foundation for learning. They learn to read, do real maths, and explore the wonder and diversity of the world.

Small, Nurturing Class

- 25 pupils maximum with small break-off groups as needed
- Learning adjusted to individual maturity and ability
- Attractive computer-equipped classrooms
- Using the Cambridge Primary Curriculum and tests

A Curriculum that Works

- Using phonics, 5 year-olds normally learn to read to a tested 8 year reading level in their first year at school
- Children succeed at the four rules of arithmetic (while their peers in some schools “explore number and shapes” but can’t add and subtract)
- They learn to write stories that tell a story because their ideas are given order and structure—and they learn how to spell accurately, use good grammar, and present work in attractive hand-writing
- They learn how their daily work relates to what God says, how he sustains what he has created, and who he is.
- Basics of Writing, Spelling, Reading and Maths are extended to include Computing, Science, History, Geography, Physical Care, Art and Music

Working With Parents

- Daily log book, weekly test results, and all work shown to parents
- Regular written reports, and parent interviews

Junior Primary Hours

9:00 am—3:00 pm

(For this year’s Terms see page 22)

Homework

30 minutes each night

Junior Primary Tuition Fee

\$1940 per term

Includes GST, stationery & most trips. We have no fund-raising. Conditions apply.

For details see page 19

SENIOR PRIMARY SCHOOL



Years 7—8 (Intermediate/Middle) Enrichment & Growth

We continue teaching the basics but enrich the range of subjects and skills, provide opportunities for studies in more depth and develop independence in work habits.

Small Class, Individual Help

- 25 pupils maximum with break-off groups as needed
- Courses are adapted for each student to meet specific needs
- Attractive computer-equipped classrooms
- Using the Cambridge Primary Curriculum and tests

Enriching the Basic Curriculum

- Development of the basics in English and Maths is maintained
- A balanced core curriculum includes Computing and IT, Science, History, Geography, Physical Care, Music and Art
- Pupils are introduced to languages (these may include Māori, NT Greek & Hebrew)
- Increased emphasis is placed on independent research skills, evaluating and applying information, and responsible decision making
- Technology (including electronics, cooking, metalwork, woodwork, crafts, horticulture, and technical drawing) is introduced in years 7 & 8
- In Years 7 & 8 exams are introduced (at the end of each year) and students exhibit their first independent research projects in public

Working With Parents

- Daily log book, weekly test results, and all work shown to parents
- Regular written reports, and parent interviews

Senior Primary Hours

9:00 am—3:00 pm

(For this year's Terms see page 22)

Homework

40 minutes each night

Senior Primary Tuition Fee

\$1940 per term

Includes GST, stationery & most trips. We have no fund-raising. Conditions apply.

For details see page 19

JUNIOR COLLEGE



Years 9—10 Beginning Specialisation & Independent Study

A core course and specialist options prepare students for advanced secondary schooling or vocational options according to individual gifts and calling.

Small Class, Individualized Courses

- 21 pupils maximum: most teaching individually or in small groups
- Gifted specialist teachers bring special opportunities
- Role models cross age boundaries: peer pressure is minimised
- Attractive, modern resources and computer-equipped classrooms
- Using the Cambridge Lower Secondary Curriculum and Tests

Beginning Specialisation and Independent Study

- Modular courses based on the Cambridge Curriculum—students work at their own level in each subject, learning good work habits and responsibility for time management
- Core courses prepare students for Cambridge IGCSE and A Levels
- Core subjects are Divinity/Bible, English, History & Global Studies, Science, Mathematics, Art, Music, Technology (with computing) and Physical Care.
- Vocational, Life Skills and Extension options can be chosen from the full range of ATEA College and Cambridge subjects

Working With Parents

- Parents, pupils and the school plan and monitor courses together
- All assessments are reported on-line to parents as they are completed
- Regular written reports and parent interviews

Junior College Hours

9:00 am—3:00 pm

(For this year's Terms see page 22)

Homework

Years 9 & 10: 1—2 hours each night

Junior College Tuition Fee

\$2380 per term

Includes GST, stationery & most trips.
Materials in some courses are extra. We
have no fund-raising. Conditions apply.
For details see page 19

SENIOR COLLEGE



Years 11—13 Flexible Preparation for Tertiary Study & Vocations

The diverse needs of students are met with extensive course choices leading to international qualifications, vocational certificates and work experience.

As a Cambridge International School, we offer the Cambridge Upper Secondary and Advanced programmes through a Cambridge Associate.

Individual & Small Group Tuition

- Courses are individually planned and taught in groups of 1 - 5 pupils
- Stimulation from interaction with students of different ages
- Teachers with special knowledge and skill
- Attractive, fully equipped, computerised classrooms and tutorial rooms
- Using the Cambridge Assessment International Education curriculum

Flexible Curriculum leads to International Qualifications

- Core subjects are selected from the Cambridge Assessment International Education extensive list with Polytech and vocational options
- Only Divinity/Bible is compulsory. There are no exclusions in the selection and matching of subject options. Students choose any combination from the range of Cambridge and vocational subjects.
- Students can graduate with a Cambridge AICE Diploma, A Levels, or IGCSE, (see page 11) and vocational qualifications and experience (see page 12)

Working With Parents

- Parents, pupils and the school plan and monitor courses together
- All assessments are reported on-line to parents as they are completed
- Regular written reports and parent interviews

Senior College Hours

9:00 am—4:00 pm

(For this year's Terms see page 20)

Homework

3—4 hours each night for A Levels

2—3 hours each night for other courses

Senior College Tuition Fee

\$2860 per term, practical subjects extra.

Includes GST, stationery & most trips.

Materials in some courses are extra.

We have no fund-raising. Conditions apply. For details see page 19

INTERNATIONAL EXAMINATIONS

ATEA College is a *Cambridge International School* presenting opportunities for students in a range of qualifications recognised and respected world-wide.

College courses include options preparing students for Cambridge Assessment International Education (CI examinations) such as A Levels. We also provide access to Cambridge examinations for external students, home-schooled students and students at affiliated schools. A separate booklet *Cambridge Assessment International Education at Atea College* provides details of courses and qualifications. The main points are:

- ATEA College students planning to sit Cambridge examinations must attend a subject evening with their parents at the start of each year
- Year 12 & 13 students aiming for A levels and/or AICE need to plan a two year course of 3 to 8 subjects at AS and A (or A2) level
- Cambridge A and AS Levels provide New Zealand University Entrance
- Students in Years 10-13 may include IGCSE papers in their courses

Subjects

Students may select courses from the full range of Cambridge subjects. Not all are taught at ATEA College in any one year, but our aim is to provide teachers and courses to meet each student's gifts and preferences as subjects are chosen.

The range of subjects includes: **Languages:** Afrikaans, Arabic, Chinese, Czech, Dutch, French, German, Hindi, Indonesian, Italian, Japanese, Malay, Marathi, Portuguese, Russian, Sesotho, Spanish, Tamil, Telugu, Thai, Turkish, Urdu. **English:** English Language, Literature in English. **Mathematics:** Mathematics, Additional Mathematics, Further Mathematics, Higher Mathematics. **Sciences:** Biology, Chemistry, Coordinated Science, Physics, Marine Science. **Humanities and Social Sciences:** Classics, Divinity, Economics, English Literature, History, History of Art, Law, Music, Psychology, Global Perspectives. **Business, Creative, Technical and Vocational:** Accounting, Art and Design, Business, Computer Science, Design and Technology, Dress and Textiles, Economics, Food Studies, Geometrical and Mechanical Drawing, Thinking Skills.

Why Cambridge Assessment International Education?

- CI meets our standards, and NZQA qualifications (eg NCEA) do not
- Our Christian perspective is respected and accepted within the CI framework
- CI qualifications are recognised all over the world
- They are trustworthy and external-exam based
- They are structured around a challenging, quality curriculum that fits our aims
- They are flexible, meeting the needs of both vocational and academic students
- Cambridge University is one of the world's most respected universities



We offer Cambridge International programmes and qualifications through a Cambridge Associate.

OPTIONS TO MEET CHILDREN'S NEEDS

Because we aim to help parents with the educational nurture of their children we look for the best way to meet the differing needs of different children. Here are some of the ways we can help:

CAREER & TERTIARY STUDY GUIDANCE

We provide students with detailed assessment and career information, advice on university and vocational courses and enrolment, and tertiary funding. University and Student Support liaison staff regularly visit the school.

VOCATIONAL & LIFE-SKILLS COURSES

Options include practical and academic courses for vocational qualifications, work experience, life-skills and courses in subjects at any appropriate level.

INTERNATIONAL STUDENT ORIENTATION & EXTRA ENGLISH

We provide 10 week orientation courses for international students wanting to prepare for enrolment in a New Zealand school. A student visa is not required for these courses. We also provide ongoing ESOL support for international students.

SUMMER & WINTER SCHOOL FOR OVERSEAS STUDENTS

We provide short term courses for international students wanting to improve their English. Lessons are held for two hours each morning during our term breaks/school holidays, and may be for one to two weeks. These courses are provided by arrangement, please ask for more information. A student visa is not required.

DISTANCE LEARNING

ATEA College has a long record of supporting home schooling and other Christian schools. Some of our curriculum is available for purchase. Anyone can make use of those resources. Please enquire. (We do not provide support or advice for distance learning students.)

EXTERNAL ENTRIES FOR EXAMINATIONS

The school encourages external students to apply to enter ATEA College and CAIE examinations. ATEA College exams can be sat at home under proper supervision, but external examinations, including CAIE, must be sat at ATEA College. Students and parents should discuss proposals well in advance of examination dates, and acceptance of any application is at our discretion. Advice about examinations is published periodically on our website. Subjects requiring practical examinations are excluded.

BRIDGING COURSES

Students who need a little extra help in preparation for vocational or tertiary studies, or to gain an entrance qualification, can enrol for a one year programme of one or two subjects.

INTERNATIONAL STUDENTS

We welcome international students and make special provision for their learning and welfare. International Students enrolling in ATEA College

- Must have a student visa to study in New Zealand
- If younger than thirteen years old must be staying in New Zealand with a parent
- If thirteen years of age or over must be in the care of a parent, or a relative or close family friend appointed by parents as Caregiver (even if living in a Homestay)
- Must be able to study at an appropriate level in English, or be also enrolled in an approved ESOL class
- Must pay the International Student Fees as scheduled. Full details are on our website: <http://www.ateacollege.com/enrolling/>

Code: ATEA College is a signatory to the 2016 *Code of Practice for the Pastoral Care of International Students* published by the NZ Qualifications Authority. Copies of the Code are available on request from this College or from the New Zealand Qualifications Authority website at <http://www.nzqa.govt.nz>

NauMai NZ provides reliable up-to-date information about life and study in New Zealand. See https://naumainz.studyinnewzealand.govt.nz/?_ga=2.215283415.1750364516.1560211960-1050787011.1560211960

Health and Travel Insurance: Most international students are not entitled to publicly funded health services while in New Zealand unless they are a resident or citizen of Australia; a national of the United Kingdom in New Zealand; or the holder of a temporary permit that is valid for two years or more. If you are not in one of these special categories and you receive medical treatment you will be liable for the full costs of that treatment. We provide *Travel and Medical* insurance for international students.

Immigration: Full details of visa and permit requirements, advice on rights to employment in New Zealand while studying, and reporting requirements are available through the New Zealand Immigration Service, and can be viewed on their website at <http://www.immigration.govt.nz>. Information about life and work in New Zealand can be found at www.studyinnewzealand.govt.nz/live-work. There is information about the costs of living in New Zealand on the webpage: www.newzealandnow.govt.nz/living-in-nz/money-tax/comparable-living-costs.

Problems: If you have a complaint relating to the Code of Practice 2016, first follow our formal complaint process. Details for dealing with problems are in student's Away from Home Guide and on our website. If this does not resolve your complaint, you can contact the [New Zealand Qualifications Authority](http://www.nzqa.govt.nz) (NZQA) by phone on 0800 697 296 or email qadrisk@nzqa.govt.nz. Or, if it is a financial or contractual dispute, you can contact [iStudent Complaints](http://www.istudent.org.nz/making-a-complaint) by phone on 0800 00 66 75 or their website: <http://www.istudent.org.nz/making-a-complaint>

International Student Fees & Refunds: All fees for the full year must be paid before beginning their course. A portion of prepaid Tuition Fees will be refunded if an International Student withdraws before starting at ATEA College. No other refunds will be made. For details see page 18.

English Language Requirement: International Students enrolling in courses leading to external qualifications must have passed a ATEA College examination in English to a satisfactory standard.

PART-TIME STUDENTS

Part-time students are welcome to join our classes. The flexibility of our courses and classes means we are able to accept students part-time at any level, especially for Senior College in preparation for Cambridge Assessment International Education Examinations.

Part-time students

- Take part in regular ATEA College classes for the relevant level and subjects.
- Have class work and assignments marked and gain the benefit of instruction from our specialist staff and interaction with other students.
- Are eligible for entry into ATEA College examinations and Cambridge Assessment International Education Examinations as ATEA College students (exam fees apply).
- Are responsible for supplying their own resources such as text books and stationery (although Partner Schools might supply these for their students).

Divinity/Bible is a compulsory course for all students, including part-time students. Up to two other courses may be added for part-time study. (If taking more than three courses at ATEA College, full-time enrolment is required.)

Courses for part-time students normally have a minimum of 10 hours of classes a term (usually 1 hour weekly, but this can vary). Practicals (such as labs in science) count as separate courses so that most Senior College part-time science students are likely to need to enrol in two courses for each science subject.

Part-time students will be issued with the same unit guides and class notes as other ATEA College students studying the same courses. Their own Partner School or home-school tutors are responsible for guidance not included in ATEA College classes, or for help with work included in units but not directly taught in class.

Enrolling: Students may enrol

- directly as for other students (see page 15), or
- through a Partner School (talk to your Partner School Principal)

Partner Schools: Partner Schools enter into an agreement with ATEA College that is tailored for each school but usually includes a concession on fees in return for the Partner School being responsible for administration of student's attendance, work, discipline and reporting, and collation of examination entries.

Part-time Student Fees: Fees are available on request depending on the proposed course. They are paid in three instalments, due by the first day of terms 1, 2 and 3. Students from Partner Schools may receive a school-based concession.

ENROLLING

Applications for enrolment are considered for any child on application from parents using College enrolment forms. Full details of enrolment steps are on our website: in every case that is the best place to go for enrolling information. Here we outline the main steps:

How to Apply for Enrolment at ATEA College:

- Read this Prospectus.
- Complete the *Application for Enrolment Form* and send it to ATEA College with the Registration Fee of NZ\$200, the most recent school report, a copy of a Birth Certificate or Passport, and anything else that will help us assess the application.
- If your application matches a vacancy we will interview the parents and child.
- We will let you know within a week whether or not your application is accepted.
- All new enrolments are provisional for a term and will be confirmed when we are satisfied the enrolment is appropriate.

Distance Learning:

It is not possible to enrol for Distance Learning. Lesson plans published on our website are available for use under the *Open License* published there, but we are unable to offer personal support for Distance Learning pupils.

Assessing Applications:

We will do what we can to help parents committed to Christian schooling, but we have complete discretion as to which pupils will be enrolled.

Conditions of Enrolment:

- Attendance must be regular and punctual, with absences explained in writing
- Students must complete class work and homework diligently and punctually
- Our school discipline and rules are to be supported
- School uniform must be worn, and school grooming guidelines complied with, while at school, and while travelling to and from school
- Teachers may only be approached about school matters at school
- Fees must be paid by the due date
- Attendance is required for all notified Parent Interviews
- You must give one term's notice of withdrawal from enrolment or courses.

Withdrawal from Enrolment and Courses:

One term's written notice of withdrawal from enrolment or courses is required:

- We must know before a term starts if your child is leaving at the end of that term: you pay that term's fees
- **If you tell us of a withdrawal after the start of a term, you will need to pay that term's fees, and the fees for the following term.**

OUR RULES & POLICIES

SCHOOL RULES

Our school rules are displayed in every classroom and are published in our *Parents' Handbook*. Particular rules and policies that parents need to be aware of when planning for children to attend ATEA College are listed on these two pages.

HOMEWORK

Homework is an essential part of the school programme and is to be completed as required. In Grades 1 - 6, children will normally be expected to complete 15 - 20 minutes homework each night. For Grades 7 & 8 homework will take 30 - 40 minutes; Grades 9 & 10: 1 - 2 hours; Grade 11: 2 - 3 hours; and Grades 12 & 13: 2 - 4 hours each night. (We may discuss variations in special circumstances.)

UNIFORM

Details of the uniform and how items are ordered are given on the school website. Pupils are to be neatly, and cleanly dressed in school uniform at all times (including during travel to and from school). During **Physical Care** lessons *Primary pupils* are to wear: Shorts and a T-shirt or top; suitable shoes; *Secondary pupils* are to wear: Track pants or shorts, and a T-shirt or top; sports shoes. All clothing items are to be labelled with the student's name [using a name that makes it unambiguous to which family the item belongs].

Hair: natural, neat and tidy hair, pinned back from the face and long hair tied up off the collar;

No make-up, nail polish or jewellery are to be worn except plain metal studs in pierced ears.

Indoors: Indoor shoes, slippers or socks when inside.

Sun Hats: Uniform sun hats are to be worn when outside in Terms 1 & 4.

INFORMATION TECHNOLOGY (IT) USE & SAFETY

All pupils are issued with a tablet computer, Chromebook, or laptop and have access to age-appropriate computing and internet facilities. We have a pro-active Internet Safety Policy which, along with our *Cybersafety Contract Forms*, is available on our website.

IT use by Primary pupils is always directly supervised by staff. Secondary students are required to sign and abide by an *Cybersafety Contract* committing them to safe and appropriate use.

All computer use takes place in "public" spaces in the school where use is observed and monitored by other students and staff. Secondary students may bring their own lap-tops and tablets to school for school use, providing they always comply with their *Cybersafety Contract*.

Cell phones must be switched off before arrival at school and may not be switched on in any circumstances until the end of the school day.

BYOD: Students may ask permission to bring and use their own tablets and computers; permission may be granted - at the discretion of the Principal. Use of all such devices at school is subject to the same rules for use and monitoring of content, including stored content, that apply for school-supplied devices.

PERSONAL INFORMATION & PRIVACY

All personal information collected and stored by the College is collected only when relevant to the work of the College. Relevant information will be released in the following circumstances:

- A parent or the pupil gives permission
- A pupil is transferring to another school
- Where there is a legal obligation to do so

Under the Privacy Act 1993 you have the right of access to all information we hold about you or your children. We have a detailed protocol regarding Personal Information which we are happy to show you.

Pupils' school work, details of honours earned and awards achieved, and photographs of children in the school environment, and their names, may be published by the school for educational purposes and in publishing information about the school.

DISCIPLINE

Correction may include:

- Rebuke
- Detentions (up to 15 minutes at intervals; and for secondary pupils up to 1 hour after school)
- Repeats and/or penalty assignments
- Restitution with a penalty for property damaged, abused or stolen.

Serious Problems: Where serious disciplinary problems arise with a domestic pupil, we will do our best to guide pupils and discuss the issues with parents to seek a resolution. We may stand down, suspend or expel a domestic pupil when in our judgement the misbehaviour of the pupil is sufficiently serious. You may ask that any suspension or expulsion be reviewed. In accordance with the principles of natural justice, International Students may be excluded from class (but not school) or may be expelled. The subsequent decision of the school is final.

Refunds of fees cannot be given when enrolments end for disciplinary reasons.

PUPILS DRIVING TO SCHOOL

Before pupils drive to school they must meet a set of conditions including applying for and being granted prior permission. Details will be explained on application.

SOLVING PROBLEMS

This is a small school and all members of the school community have direct access to the Principal and other staff. We have a commitment to resolving problems promptly and fairly. We hope that most problems can be resolved informally but procedures for making complaints and resolving problems are set out in the school's *Parent's Handbook*, *Secondary Student's Guide* and *Away from Home Guide* as well as on our website.

INTERNATIONAL STUDENTS

FEES for 2020

Fee Tier	Fee Per Year
Primary School: Years 1 - 8	\$18970
Junior College: Years 9 - 10	\$21760
Senior College: Years 11 - 13	\$25680
<p>Discount: An International Student's Fee will receive a discount of 8% if the full year's fees are paid by 15 December in the preceding year. A Full year's fees must be paid before tuition begins. Fees for students beginning during the school year will be adjusted according to the terms attended. Students beginning in terms 3 & 4 are required to enrol and pay tuition fees for the following year at that time. Enrolments are accepted from international students on an annual basis. Students who complete a satisfactory year will be offered placement for the following year in November/December, which must be confirmed by payment of a Placement Fee. These fees include Uni-Care Travel and Health Insurance, except when pupils plan to attend for less than one term, when insurance will be invoiced separately. We accept cash, cheques and direct credit (no Credit Cards). Cash payments may attract a "Cash Handling" fee at the bank which you will be charged for.</p> <p>Special Tuition: Group \$30 per hour; Individual \$60 per hour.</p> <p>Document Fee: \$100 per document for nonstandard or replacement documents.</p>	

ENROLMENT

Registration Fee: All applications require a \$200.00 registration fee. This fee is not refundable.

Enrolment Fee: NZ\$600.00. This fee is required to confirm acceptance of any place offered. This amount is an additional and separate fee and is not offset against tuition fees. It is not refundable.

WITHDRAWALS & REFUNDS

- If an **International Student** withdraws before starting at ATEA College, a refund of prepaid Tuition Fees will be made less a deduction of 25% (to cover the school's commitment to the first term of tuition).
- **No other refunds will be made.**

All fees are in \$NZ, include GST @ 15%, are correct @ 22 January 2020 and are subject to change without notice.

NEW ZEALAND STUDENTS

FEES for 2020

Fee Tier	Fee	
	Per Year	Per Term
Primary School: Years 1 - 8	\$8360	\$2090
Junior College: Years 9 - 10	\$10280	\$2570
Senior College: Years 11 - 13	\$12320	\$3080

Discount: Course Tuition Fees receive a 2% discount if the year's fees are paid in full by 3:00 pm on the due date.

Late payment: When a tuition fee is not paid in full 30 days after the due date, the amount outstanding will be charged interest at 20% pa.

Another payment option is 10 monthly equal payments by automatic payment starting February and finishing November. Please contact the Bursar for further details: <bursar@ateacollege.com>. Please advise the Bursar by 20 January should you wish to take advantage of this option. (The late penalty applies). We accept cash, cheques and direct credit (no Credit Cards). Cash payments may attract a "Cash Handling" fee at the bank which you will be charged for.

Registration Fee: All applications require a \$200.00 registration fee. This fee is not refundable.

Enrolment Fee: \$600.00. This fee is required to confirm acceptance of any place offered. This amount is an additional and separate fee and is not offset against tuition fees. It is not refundable.

Practical Subjects Years 11-15: \$150 per practical subject per term applies to each course in the Sciences, Art, ICT/Computer Science and Languages.

Special Tuition: Group \$30 per hour; **Individual** \$60 per hour.

Document Fee: \$100 per document for nonstandard documents (eg graduation certificates) or replacement of documents (eg school records or insurance policies).

WITHDRAWALS & REFUNDS

- One term's notice of withdrawal is required. We must know before a term starts if your child is leaving at the end of that term: you pay that term's fees. If you tell us of a withdrawal after the start of a term, you must pay that term's fees, and the fees for the following term.
- Fees paid in advance of their due date may be refunded if proper notice of withdrawal has been given. **No other refunds will be made.**

All fees include GST @ 15%, are correct @ 22 January 2020 and are subject to change without notice.

2020 DIRECTORY

Website: <http://www.ateacollege.com>

Address: 21 Domain Road, Panmure,
Auckland 1072
New Zealand

For administration, email: admin@ateacollege.com

For accounts, email: bursar@ateacollege.com

The school does not wish to receive unsolicited electronic messages at this or any other address

Phones: (+64) 09-570-5873, 027-414-3221

STAFF

Principal

Mrs E Hall

Teachers & Tutors

Miss L M Daynes

Mr G Stewart

Dr S Bier

Mrs H Lien

2020 TERMS & HOLIDAYS

Term	Starts	Ends
Term 1	28 January	3 April
Term 2	20 April	26 June
Term 3	20 July	25 September
Term 4	12 October	Secondary: 4 December Primary: 11 December

(Grades 11-13 finish when exams end)

Statutory Holidays falling in term time will be observed.

In 2020 they are:

Waitangi Day: Thursday 6 February

ANZAC Day observance: Monday 27 April

Queen's Birthday: Monday 1 June

Labour Day: Monday 26 October

@ 10 February 2020